

Top features

- Boilerless combi steamer with user-friendly controls
- Cook Correction technology, guarantees quality and saves energy
- Stackable with matching rotisserie for menu differentiation

Standard characteristics

- Combi steamer; direct steam injection
- 8 levels with a height of 2¾ mm
- Suitable for 1/1 GN or 400x600 mm
- 250 programs with up to 9 steps
- Multi-preparation functionality: steaming, combi steaming, convection and regeneration
- Semi-automatic cleaning system
- High speed dual fan system for fast preparation and even cooking
- Integrated hand shower
- Two step safety door handle
- Clima-safe: dehumidification functionality for operator safety
- Bright halogen lighting
- Double glass door for perfect insulation and safety
- High quality stainless steel construction, exterior and interior

Accessories

- 1/1 GN-pans, grids, chicken racks
- Matching stand

Optional

- Single unit stacked under a matching rotisserie
- Core temperature probe



Multi-preparation: steaming...



...combi steaming, convection and regeneration.



Suitable for 1/1 GN or 40x60 cm



Dual Fan system

Combi Steamers



TRC 8 Intelligent

Though intelligent the Turbo Retail Combi is easy to use. It ensures a consistent cooking cycle as operators are instructed in following the right cooking procedure.

The Cook Correction Technology corrects alterations in the cooking cycle due to half-loads, overloads, or products that fall under the average standard temperature.

It measures abnormalities in the temperature curve and corrects the cycle automatically ensuring energy-efficient cooking.

If desired, the TRC can be stacked with a matching rotisserie. Combining a rotisserie and a combi steamer enables you to offer both an original rotisserie chicken and a wide range of high-quality, well-balanced meal items.



The best combi steamer
for retailers

TRC 8 Intelligent

Item	Description
1	Water supply inlet shower
2	Water supply inlet oven
3	Space to the wall
4	Exhaust
5	Power cable 98½"

Dimensions TRC 8

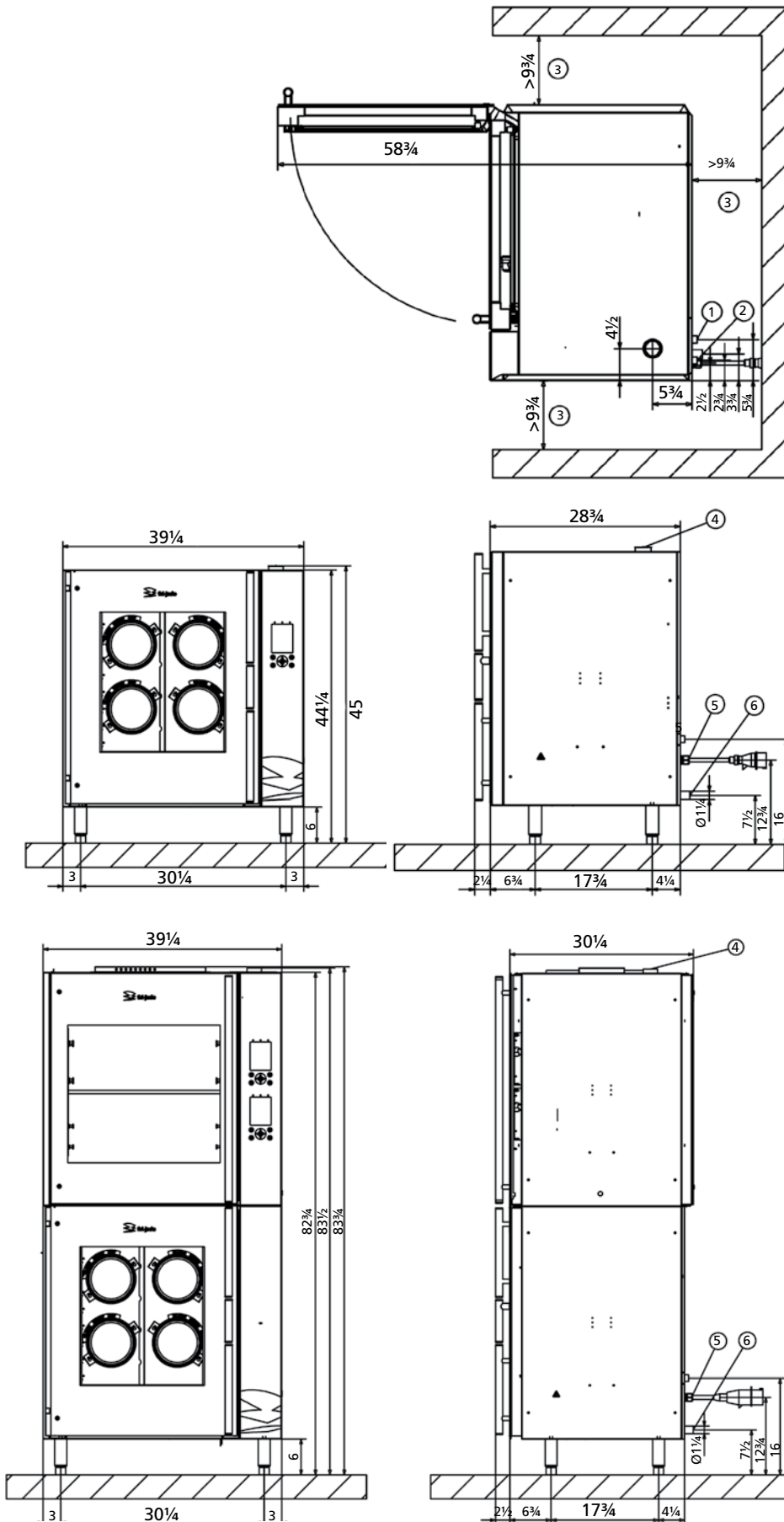
Width	39¼"
Depth	31¼"
Height	44¼"

Dimensions TRC 8 + TDR 8

Width	39¼"
Depth	32¾"
Height	83¾"

Technical data TRC8 / TDR+TRC8

Net weight	388 / 770 lb
Gross weight	456 / 904 lb
Voltage	400/230 V
Phase	3~
Frequency	60 Hz
Power	11 / 21 kW
Water connection	2xG¾"
Water drain	Ø 30 mm
Water pressure	min. 1 bar
Amps	32 A
NEMA	15-50P (2x)



These are basic drawings. For more detailed technical information, please refer to the installation manual at www.frijado.com.

Fri-Jado Inc.
1401 Davey Road
Suite 100
Woodridge IL 60517
Toll free 877-374-5236
Fax 630-689-1424
e-mail us.info@frijado.com
www.frijado.com