



*Fresh ideas in foodservice equipment*



BKI's MDW-48-4C Multi-Deck Warmer shown above

### Agency Approvals:



### Options:

- Pass-thru sliding mirrored doors
- Caster, floor or counter mounting
- 3, 4, 5 shelves
- 36" or 48" shelf widths
- Vertical or Cascading shelf design

# Multi-Deck Warmer

**Models:** MDW-36-C, MDW-48-V,  
MDW-VW

## *A Multi-Tier, Self-Serve Hot Food Merchandiser*

Create a grab 'n go profit center by moving deli offerings where customers are. BKI's Multi-Deck Warmer is designed to give a flexible, convenient way to take advantage of self-serve, impulse purchases. Shelves offer easy access and are individually lit to showcase an enticing array of signature items, daily specials or pre-packed meal options.

The energy efficient MDW is a versatile, multi-tier, self-serve hot case available in a variety of sizes and attractive styles with plenty of options to meet your needs. Individual preset controls for each shelf provide consistent heat and allow you to set different temperatures for different foods.

BKI's MDW is designed for ease of use and includes features that ensure safe, reliable operation.

### Standard Features:

- Unique, Energy Efficient Heated Shelf
- Lighted Shelves for Increased Product Visibility
- Individual Controlled Shelves
- Single Glazed End Walls with Attractive Profile
- 2" Bumper on Front End and Sides

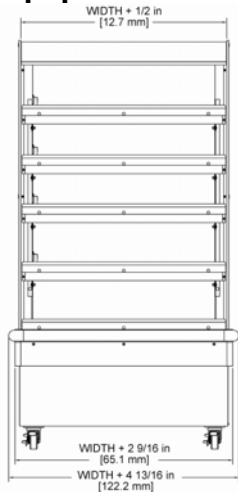
**BKI North America**  
PO Box 80400  
Simpsonville, SC 29680-0400 USA  
Telephone: (864) 963-3471  
Toll Free: (800) 927-6887

**BKI Europe**  
Theale Technology Centre  
Station Road • Theale  
Reading • West Berkshire • RG7 4AA  
Telephone: 0870 9904242 • Fax: 0870 9904243

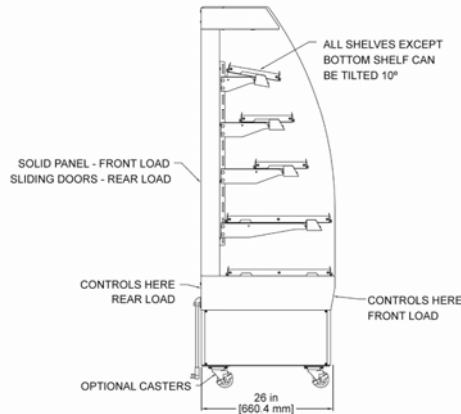


# Multi-Deck Warmer (MDW-36-C, MDW-48-V, MDW-VW)

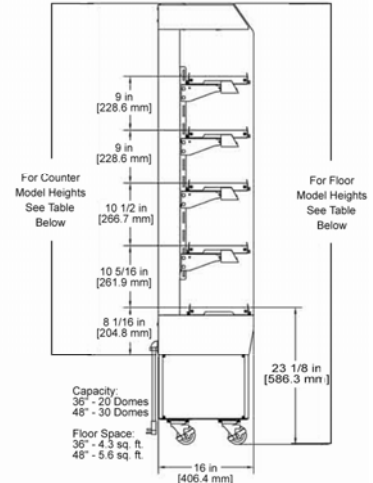
## Equipment Dimensions:



FRONT VIEW



SIDE VIEW CASCADING (-C)



LEFT SIDE VIEW (-V)

## Mechanical Specifications:

	Wd	Dp	3-Shelf		4-Shelf		5-Shelf	
			Ht	Wt	Ht	Wt	Ht	Wt
Counter	36"	16" (406.4 mm)	41 1/8" [1044.7 mm]	200 lbs (90.7 kg)	50 1/8" [1273.3 mm]	380 lbs (172.4 kg)	59 1/8" [1501.9 mm]	560 lbs (254 kg)
		26" (660.4 mm)		300 lbs (136 kg)		480 lbs (217.7 kg)		660 lbs (299.3 kg)
	48"	16" (406.4 mm)		280 lbs (127 kg)		460 lbs (208.1 kg)		620 lbs (281.2 kg)
		26" (660.4 mm)		380 lbs (172.4 kg)		560 lbs (245 kg)		740 lbs (335.6 kg)
Floor	36"	16" (406.4 mm)	56 3/16" [1427.2 mm]	240 lbs (108.9 kg)	65 3/16" [1655.8 mm]	420 lbs (190.5 kg)	74 3/16" [1884.4 mm]	600 lbs (271.1 kg)
		26" (660.4 mm)		360 lbs (163.3 kg)		540 lbs (245 kg)		720 lbs (326.6 kg)
	48"	16" (406.4 mm)		320 lbs (145.1 kg)		500 lbs (226.7 kg)		680 lbs (308.4 kg)
		26" (660.4 mm)		440 lbs (200 kg)		620 lbs (281 kg)		800 lbs (362.8 kg)

## Electrical Specifications:

Units requiring 20 amp or smaller breaker					All units are single phase only											
36" Wide Warmers			208 V			230 V			240 V			120 V				
	Domes		Watts	Amps	Brk	Watts	Amps	Brk	Watts	Amps	Brk	Watts	Amps	Brk		
MDW-36-3V	12		849	4.08	10	1013	4.41	10	1104	5.31	10	1020	8.50	15		
MDW-36-3C	16		1139	5.48	10	1364	5.93	10	1486	7.14	10	1365	11.38	15		
MDW-36-3VW	24		1719	8.26	15	2066	8.98	15	2250	10.82	15	N/A	N/A	N/A		
MDW-36-4V	16		1192	5.73	10	1406	6.11	10	1532	6.38	10	1420	11.83	15		
MDW-36-4C	24		1772	8.52	15	2108	9.16	15	2296	9.57	15	N/A	N/A	N/A		
MDW-36-4VW	32		2352	11.31	15	2809	12.21	20	3060	12.75	20	N/A	N/A	N/A		
MDW-36-5V	20		1445	6.95	10	1717	7.46	10	1870	7.79	10	1730	14.42	20		
MDW-36-5C	28		2025	9.74	15	2418	10.51	15	2634	10.98	15	N/A	N/A	N/A		
MDW-36-5VW	40		2895	13.92	20	3470	15.09	20	3780	15.75	20	N/A	N/A	N/A		
48" Wide Warmers			208 V			230 V			240 V			120 V				
MDW-48-3V	18		1110	5.34	10	1336	5.81	10	1455	7.00	10	840	7.00	10		
MDW-48-3C	24		1505	7.24	10	1818	7.90	10	1980	9.52	15	N/A	N/A	N/A		
MDW-48-3VW	36		2295	11.03	15	2782	12.09	20	3030	14.57	20	N/A	N/A	N/A		
MDW-48-4V	24		1540	7.40	10	1836	7.98	10	2000	9.62	15	1180	9.83	15		
MDW-48-4C	36		2330	11.20	15	2800	12.17	20	3050	14.66	20	N/A	N/A	N/A		
MDW-48-4VW	48		3120	15.00	20	3764	16.36	25	4100	19.71	25	N/A	N/A	N/A		
MDW-48-5V	30		1880	9.04	15	2254	9.80	15	2455	11.80	15	1430	11.92	15		
MDW-48-5C	42		2670	12.84	20	3218	13.99	20	3505	16.85	25	N/A	N/A	N/A		
MDW-48-5VW	60		3855	18.53	25	4663	20.28	30	5080	24.42	35	N/A	N/A	N/A		

**BKI North America**  
 PO Box 80400  
 Simpsonville, SC 29680-0400 USA  
 Telephone: (864) 963-3471  
 Toll Free: (800) 927-6887

**BKI Europe**  
 Theale Technology Centre  
 Station Road • Theale  
 Reading • West Berkshire • RG7 4AA  
 Telephone: 0870 9904242 • Fax: 0870 9904243

